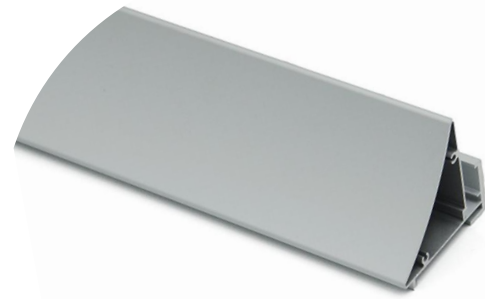


# HL-BAPL044A

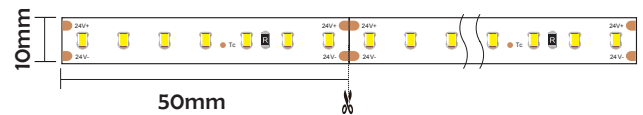
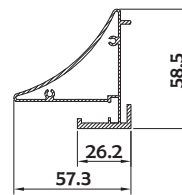


- Professional industrial design with sharp lines.
- AL6063 aluminum profile with excellent heat dissipation performance.
- Closed-fitting end cap without screw, easier installation.



## I Basic Parameters

Material	AL6063
Surface	Anodized/Painting
Lighting source width	10mm
Length	4m/max
Application	For kitchen and bathroom /advertising/house decoration application.



## I Installation Accessories



Aluminum Profile



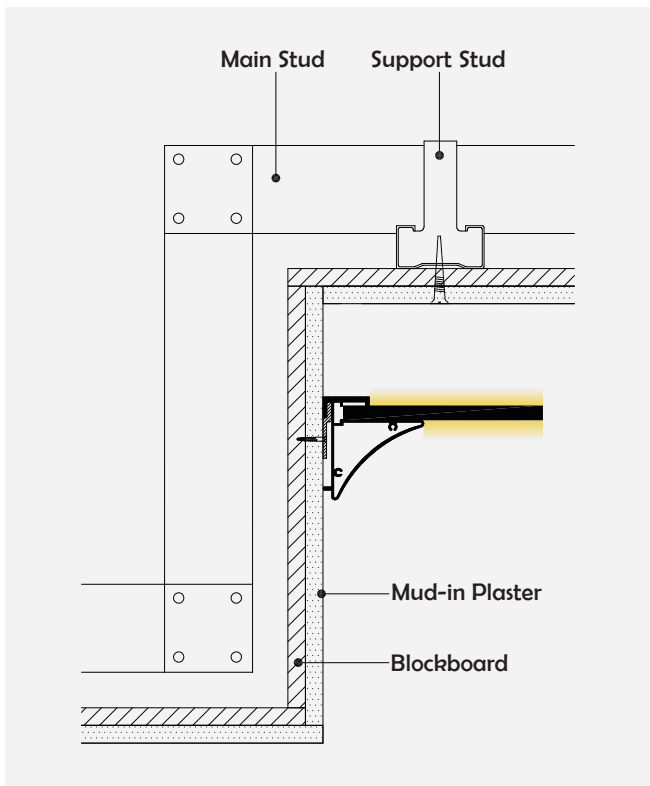
End Cap



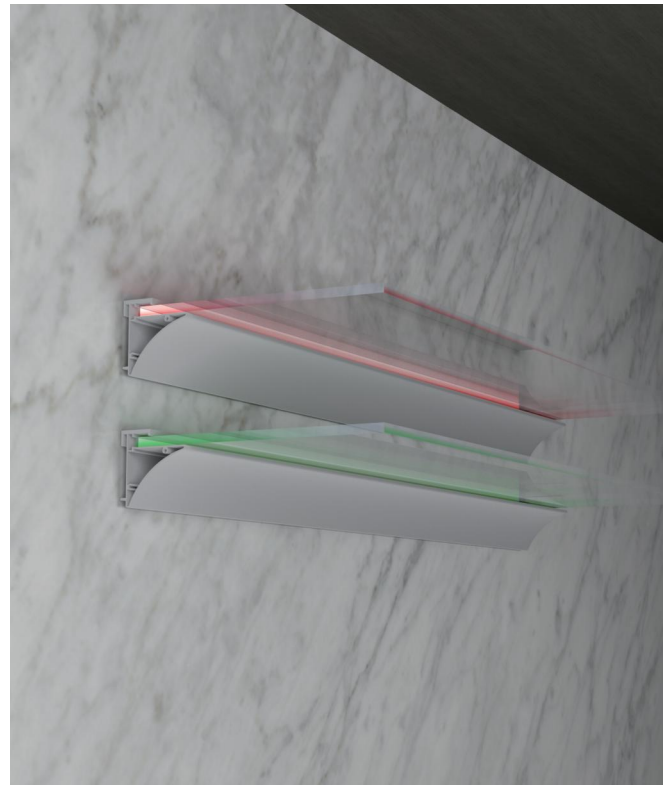
Clip

Model	Cover Model	Cover		End Cap	Clip	Suspended Rope (Set)	Connector	Lighting Source (width)
		PC	PMMA					
HL-BAPL044A	/	/	/	Plastic	Stainless steel	/	/	Max 10mm

## I Structure image



## I Effect image



## I Application

