

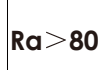


# HELIAN

## Smart Puzzle Series Installation Manual

**Linear Chandelier**  
Pendant/Surface

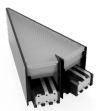
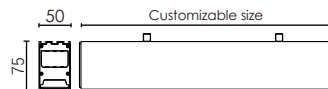
**HL-PB5075A**



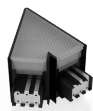
### Smart Puzzle Series Product (unit:mm)



module 1



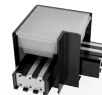
30°module



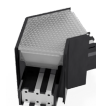
45°module



60°module



90°module



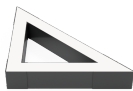
120°module



135°module



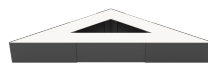
HL-PB5075A-A



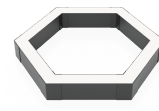
HL-PB5075A-B



HL-PB5075A-C



HL-PB5075A-D



HL-PB5075A-E



HL-PB5075A-E80/E81

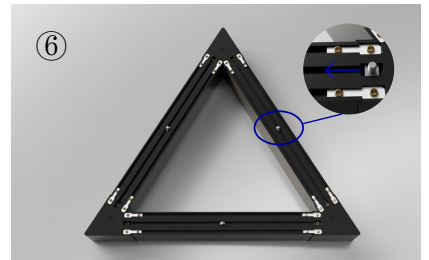
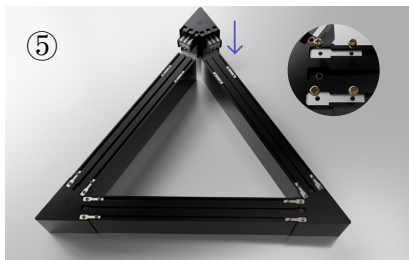
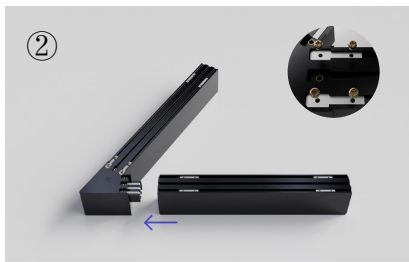


### WARNING

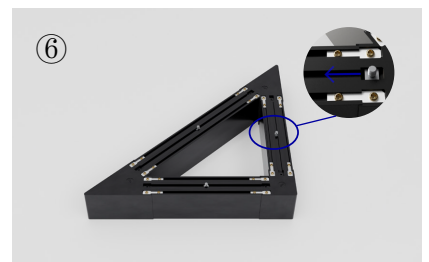
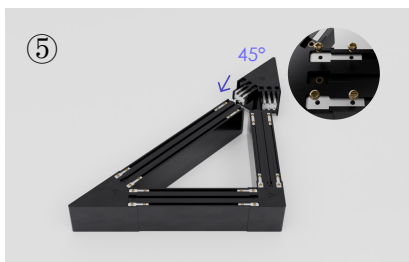
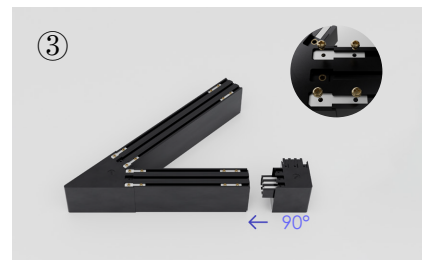
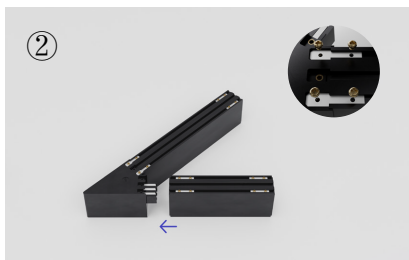
- Maintenance, installation and electrical connections should
- Do not power on before the installation parts are spliced.
- Luminaire is not suitable for coating with thermal insulation material.
- Armatures can not be mounted on conductive surfaces.
- Only original parts should be used during repair and maintenance.
- Manufacturer will not accept liability for injury or damage resulting from incorrect use or installation.

## Installation

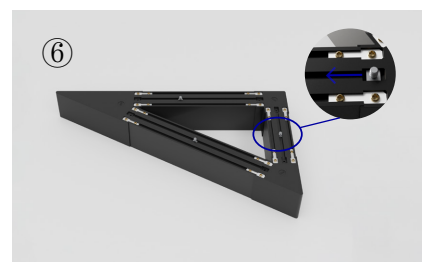
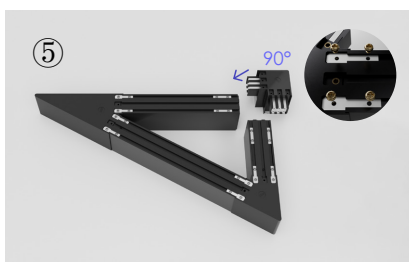
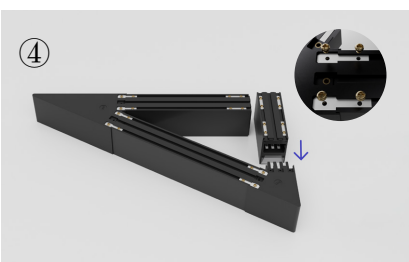
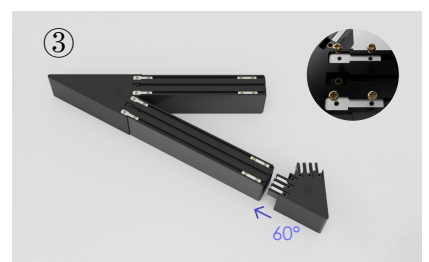
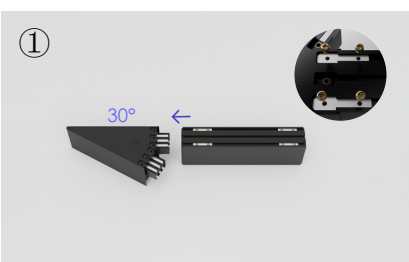
1-A:Assembly product



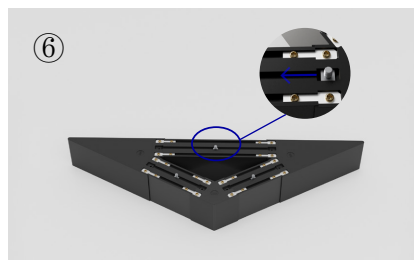
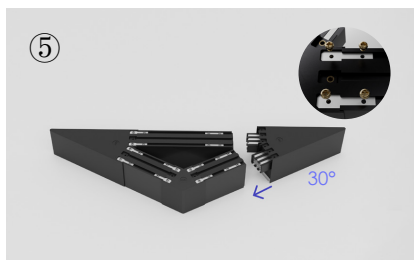
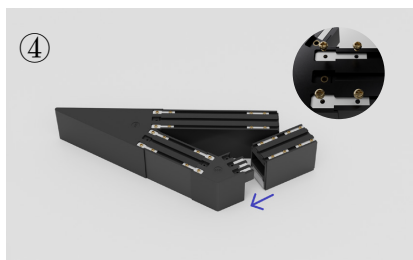
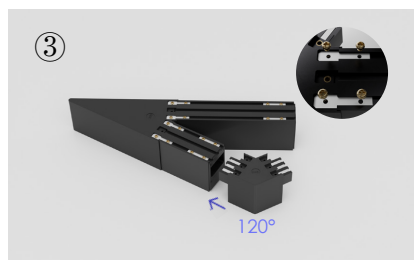
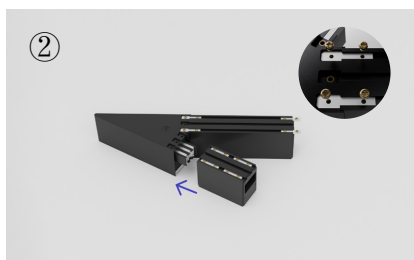
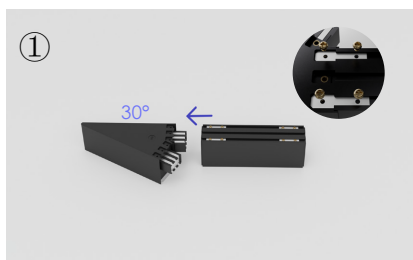
## 1-B:Assembly product



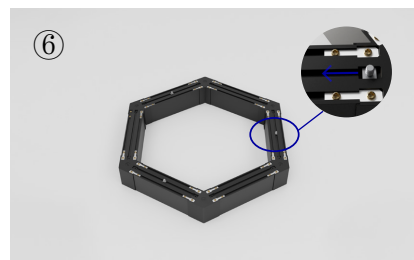
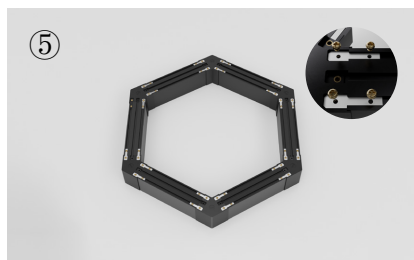
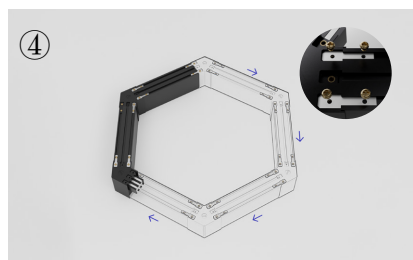
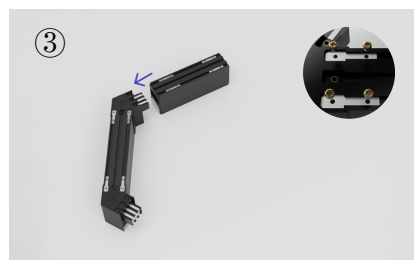
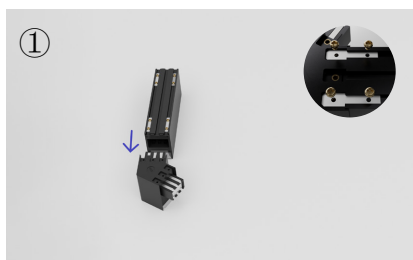
## 1-C:Assembly product



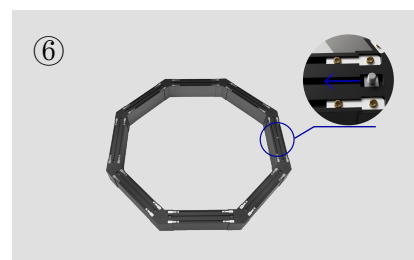
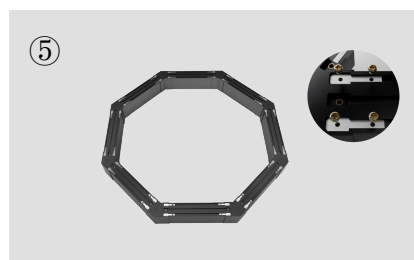
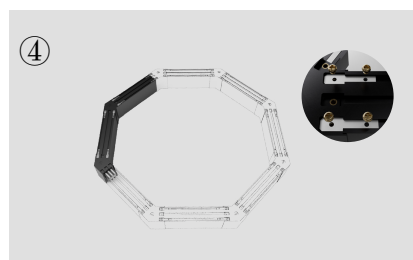
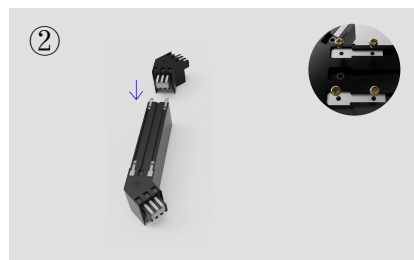
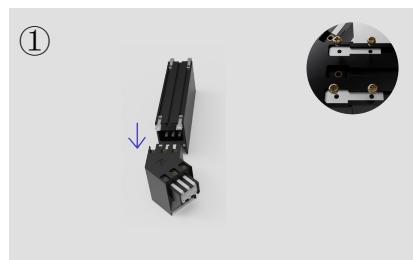
## 1-D:Assembly product



## 1-E:Assembly product



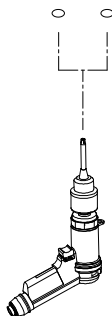
## 1-E80/E81 Assembly product



## 2:Install (A/B/C/D/E)

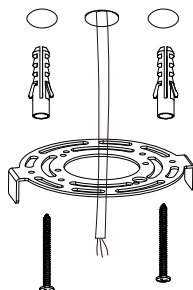
Please make sure that the place of installation could stand 10 times the weight of itself before installing in a place where is no vibration, no swing, and no fire risk.

1



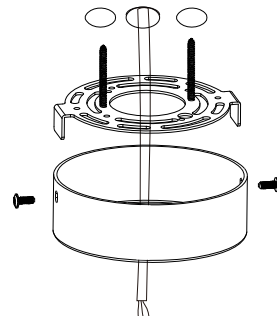
-- Use an electric drill to make holes in the appropriate locations on the wooden board or cement wall.

2



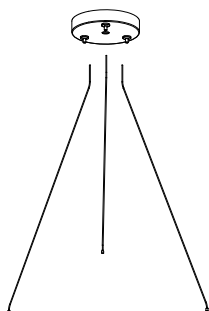
-- Secure the rubber plug in the hole; Use M4\*25 screws to secure the bracket to the rubber plugs.

3



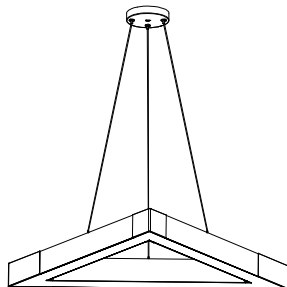
-- Use M4\*10 screws to secure the ceiling plate to the bracket.

4



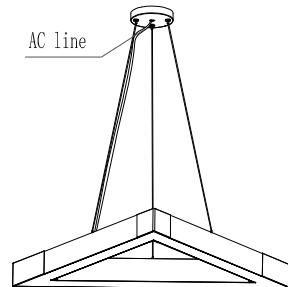
-- Thread the hanging rope through the locking device on the ceiling plate.

5



-- Attach the light fixture to the hanging rope, adjust to the desired height and position, and the installation is complete.

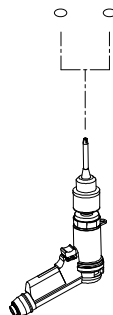
6



-- After installation, correctly connect the AC power line of the light fixture to the mains power supply.

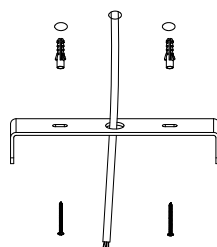
## 2:Install (E80/E81)

1



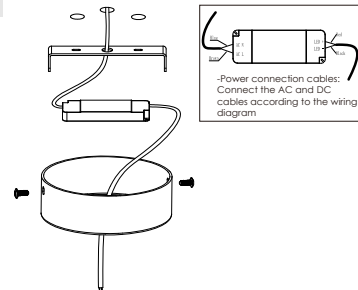
-- Use an electric drill to make holes in the appropriate locations on the wooden board or cement wall.

2



-- Secure the rubber plug in the hole; Use screws to secure the bracket to the rubber plugs.

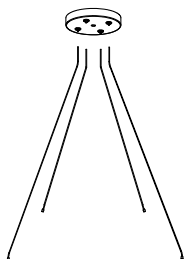
3



-- After connecting the wires, put the power directly into the ceiling plate. Install the ceiling plate lock on the bracket

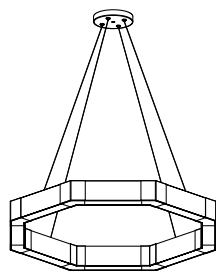


4



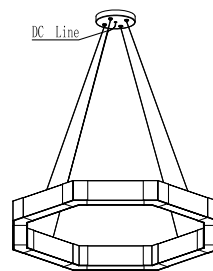
-- Thread the hanging rope through the locking device on the ceiling plate.

5

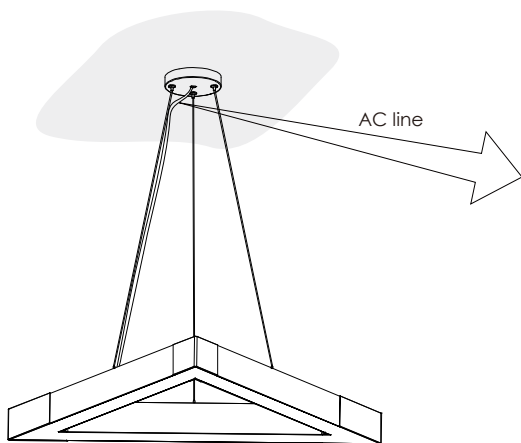


-- Attach the light fixture to the hanging rope, adjust to the desired height and position, and the installation is complete.

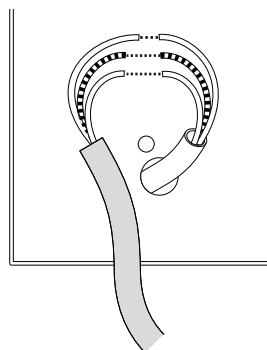
6



-- After installation, correctly connect the AC power line of the light fixture to the mains power supply.



Brown (L)  
Yellow-Green (⊕)  
Blue (N)



# WARNING



Please cut off the power supply before installation

