



SMD3528 240LED/m DC24V

High Efficiency LED Strip





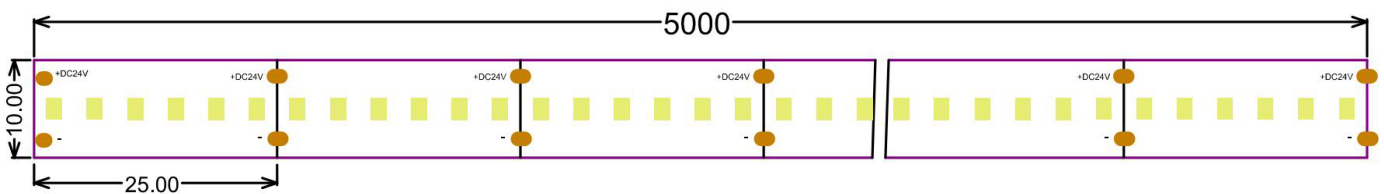
Product Features

- Low energy consumption, high light efficiency, high quality SMD3528 LED.
- Soft and can be optionally bent to any shape with Graceful figure.
- Easy to connect and install, seamless docking, using DC24V voltage, safe and reliable.
- Good luminous brightness, soft light without glare, No spot, uniform light.
- 240LED/meter, 5meter/roll.

Applications

- Decorative lighting for exhibition shelves, advertising light box and hotel etc.
- Backlight for edge lighting / signage.
- Holiday decorative lights, residential and outdoor lighting.
- Bridge, garden, road and car lighting etc.
- Long-distance project but with inconvenient wiring.

Structure & Parameter



Optocal Parameter

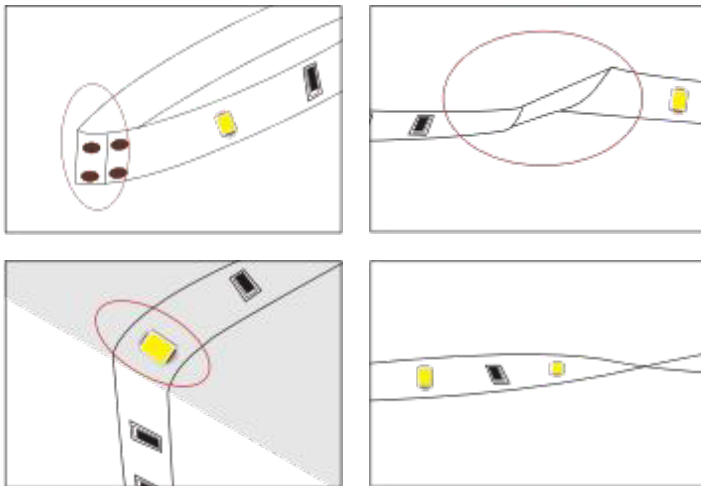
Model NO	HL-R240X3528/10
Input voltage	DC24V
CRI(Ra)	≥90Ra
Power/m	19.2W/m
Lumen/led	5-7Lm/led
Color temperature	2700k/3000k/4000k/6000k
Lumen/m	1555Lm

Basic Parameter

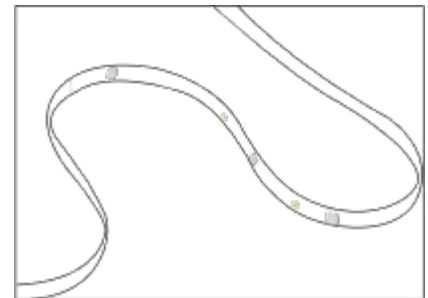
LED Q`ty/m	240 LED/m
SMD Type	3528
Working hour	30000h
Warranty	2 years
Working temperature	-20°~+45°
Minim cuttable length	25mm
PCB Width	10mm
Packing	5 meter/roll

Cautions

When install the led strip, please note the installation technique. The ed strip can be bent, but not distorted, as shown below.



Distortion (Wrong)

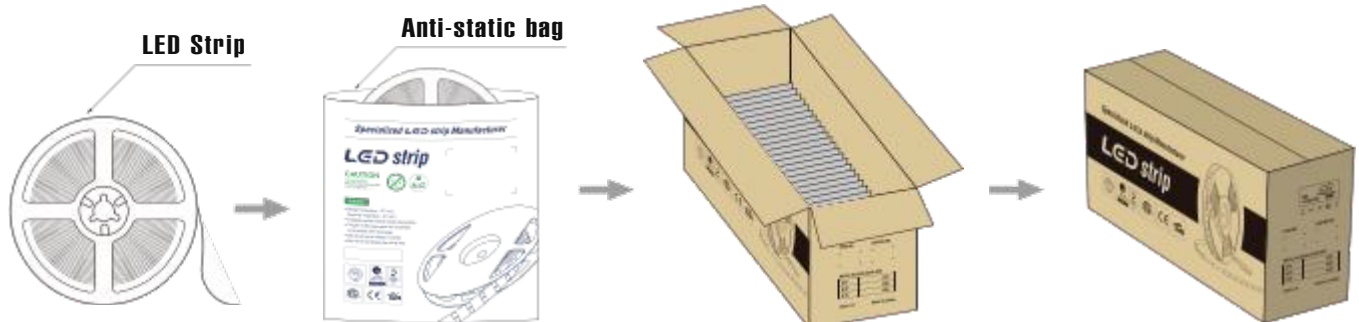


Bend (Right)

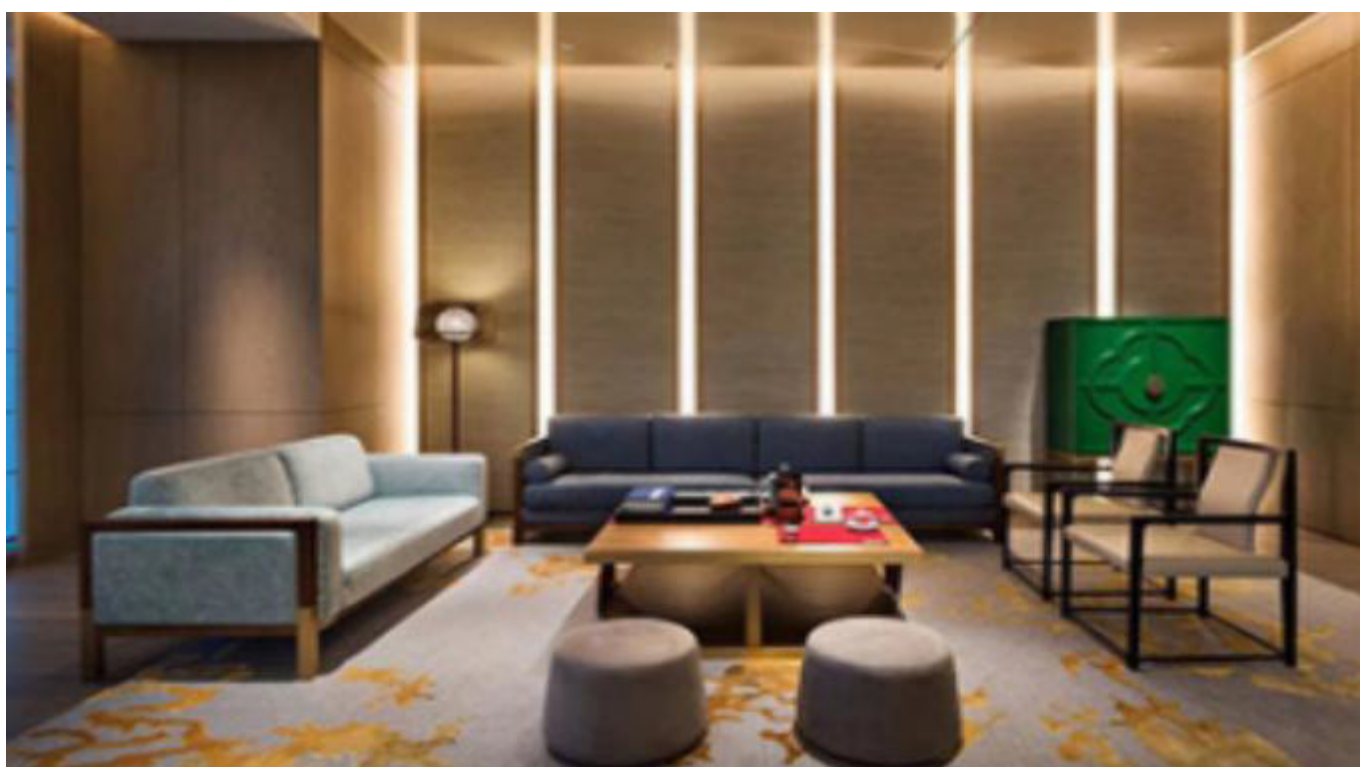
➤ LED strips are low voltage products, you must use the power supply(transformer). Please don't connect the led strip directly to the AC 110V or AC 220V, otherwise it will burn out the LED strips.

➤ Clean up the installation surface, it will ensure the reliability of the adhesive. The electrical connection process must be operated by a professional person.

Package



Application



H E L I A N

**Professional
LED strip
manufacturer**

Shenzhen Hellan Electronics Co.,Ltd



3F, Tonggao building 2, Sanlian industrial area, Songbai Rd, Shiyan Town, Bao'an District, Shenzhen, Guangdong, China



OUR EMAIL
admin@hlled.com



OUR PHONE
(86)-755-27606785



OUR WEBSITE
www.hlled.com