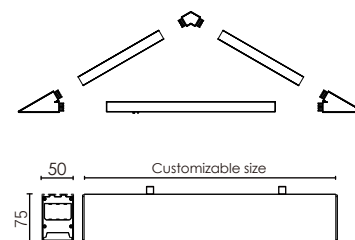




## Feature

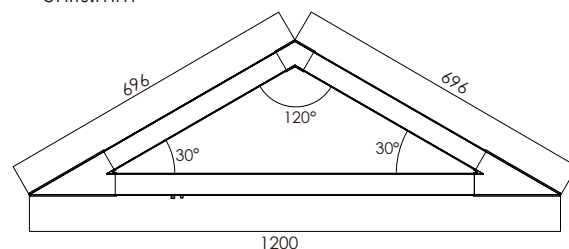
- Modular triangular linear lighting offer infinite possibilities.
- High quality, energy-efficient LED Lighting for environmental protection.
- The power supply is built-in and the wiring is of the PUSH-IN shrapnel type. It is easy to install, disassemble, and maintain.
- With emergency function.
- For offices, conference rooms, supermarkets, home lighting, airports, museums, libraries, corridors, cinemas, hotels, etc.



## Luminaire parameters

Model	HL-PB5075A-D12-E
Size	1200*696*696mm
Nominal Power	80W
LM	12000lm±10% (@4000K)
Beam Angle	110°-120°
Input Voltage	AC100-277V
CCT	2700-6500K
CRI	>80
Protection Grade	IP20
Certification	CE、ROHS
Warranty	3 years
Emergency Time	≤1.5Hours
Emergency Power	15W
Emergency LM	2200lm±10% (@4000K, Full battery)
Battery Parameters	11.1V/5000mAh
Charging Time	≥24Hours

Units:mm



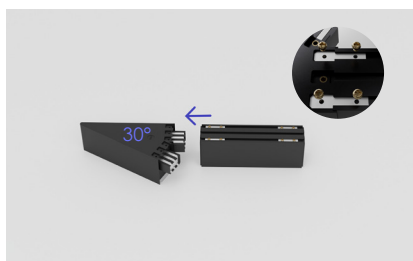
## Installation Accessories



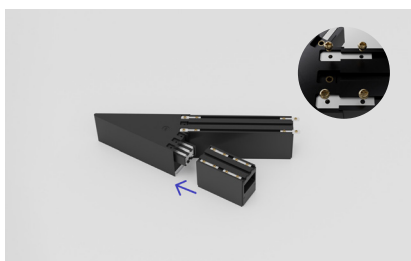
## Installation

### Step 1: Assembly product

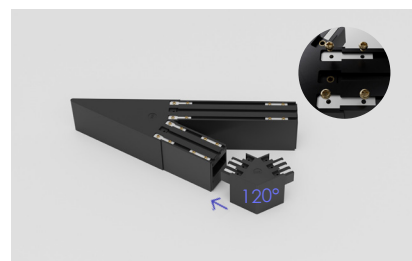
Please assemble the modules corresponding to the correct angles.



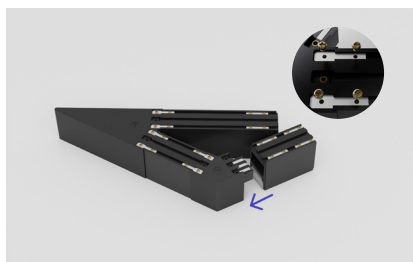
①



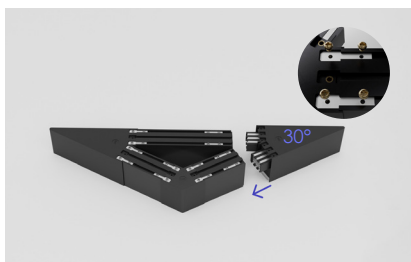
②



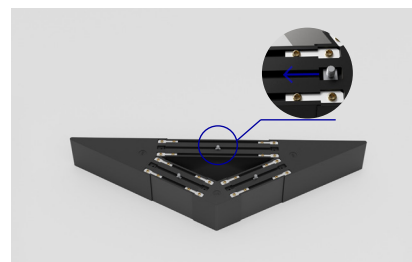
③



④



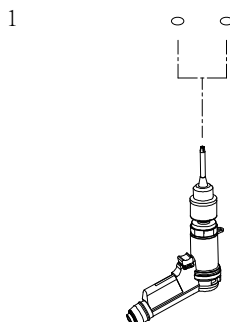
⑤



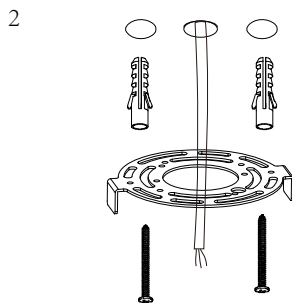
⑥

### Step 2: Install

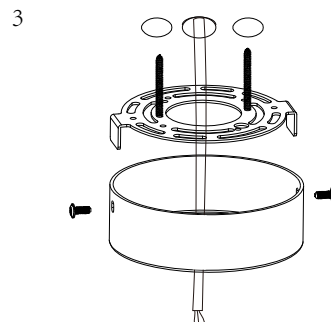
Please make sure that the place of installation could stand 10 times the weight of itself before installing in a place where is no vibration, no swing, and no fire risk.



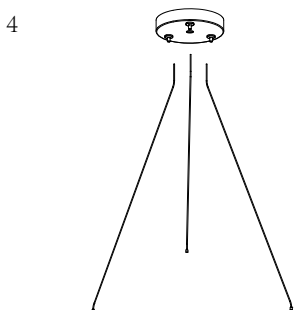
-- Use an electric drill to make holes in the appropriate locations on the wooden board or cement wall.



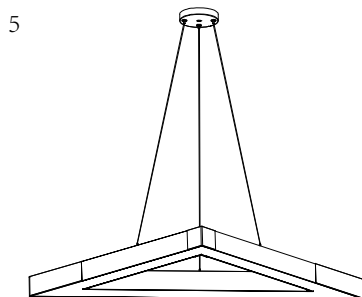
-- Secure the rubber plug in the hole; Use M4\*25 screws to secure the bracket to the rubber plugs.



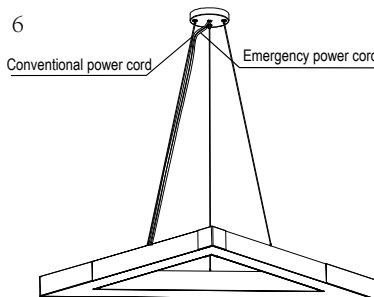
-- Use M4\*10 screws to secure the ceiling plate to the bracket.



-- Thread the hanging rope through the locking device on the ceiling plate.



-- Attach the light fixture to the hanging rope, adjust to the desired height and position, and the installation is complete.

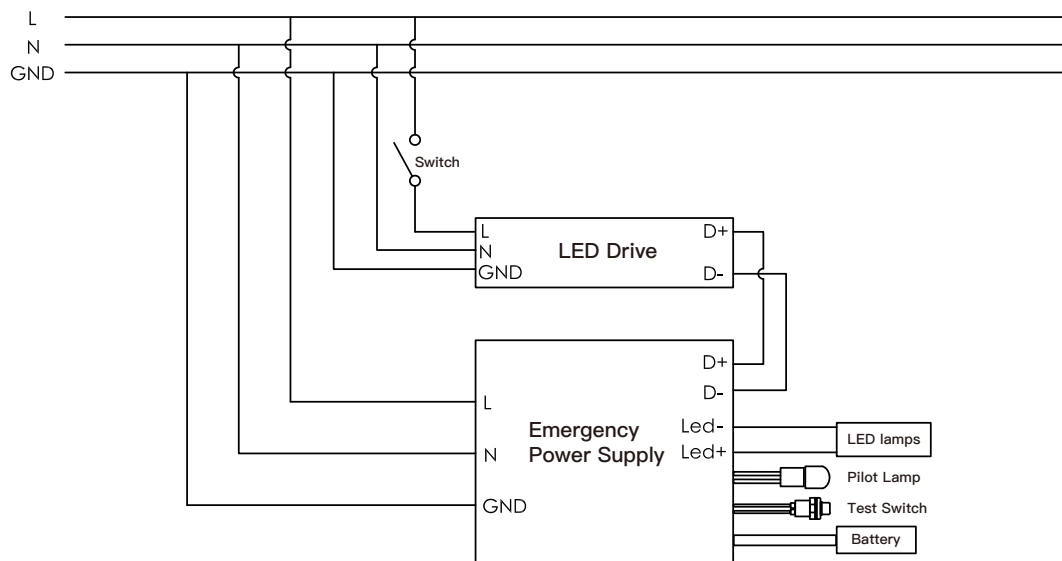


-- After installation, correctly connect the AC power line of the light fixture to the mains power supply.

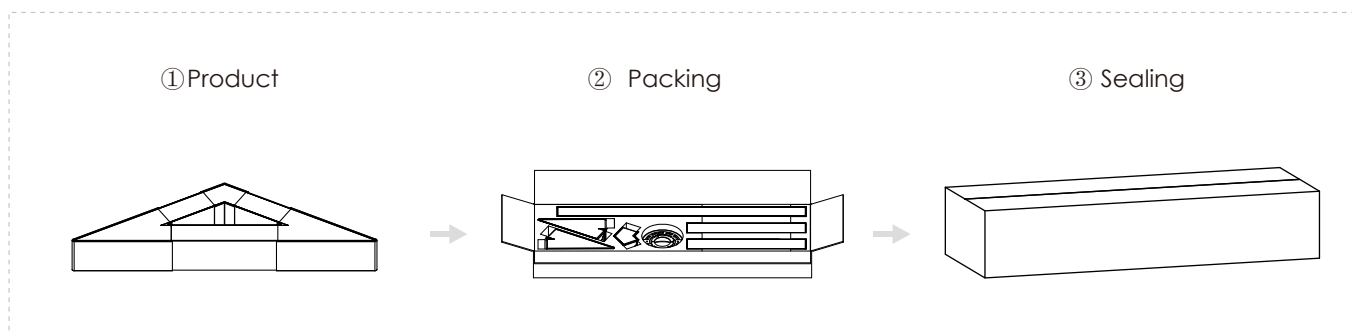
## Emergency Operation

When the AC power goes out, the emergency driver detects the AC power outage and automatically switch to the working emergency mode. The green LED light off. When the AC power is restored, the emergency driver backs to AC power working and starts re-charging, the green LED light on.

## CIRCUIT DIAGRAM



## Packing



Model	HL-PB5075A-D12-E	Carton box	950*510*224mm
Inner box	930*245*100mm	QTY/Carton	4 PCS
NW	5.2kg/PCS	GW	6kg/PCS

## USER INSTRUCTIONS

- 1.The installation of the unit must be done by a qualified electrician.
- 2.The unit must be earthed in case an earth connecting point exists.
- 3.Ensure that the mains is switched off during servicing.
- 4.Ensure that after the installation,the unit is properly fixed and the cable clamps (if exist)are well tightened.
- 5.Manufacturer will not accept liability for injury or damage resulting from incorrect use or installation.