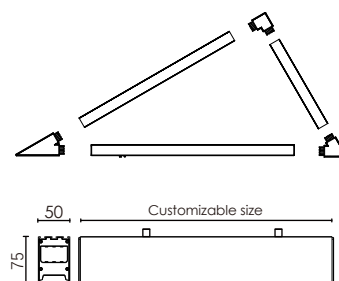




## Feature

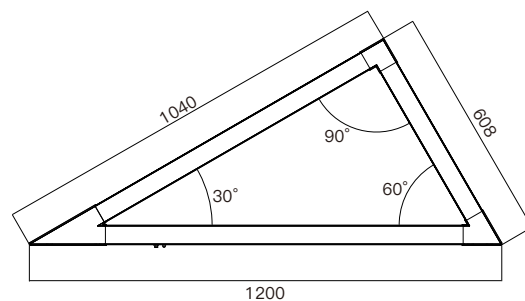
- Modular triangular linear lighting offer infinite possibilities.
- High quality, energy-efficient LED Lighting for environmental protection.
- The power supply is built-in and the wiring is of the PUSH-IN shrapnel type. It is easy to install, disassemble, and maintain.
- With emergency function.
- For offices, conference rooms, supermarkets, home lighting, airports, museums, libraries, corridors, cinemas, hotels, etc.



## Luminaire parameters

Model	HL-PB5075A-C12-E
Size	1200*1040*608mm
Nominal Power	80W
LM	12000lm±10% (@4000K)
Beam Angle	110°-120°
Input Voltage	AC100-277V
CCT	2700-6500K
CRI	>80
Protection Grade	IP20
Certification	CE、ROHS
Warranty	3 years
Emergency Time	≤1.5Hours
Emergency Power	15W
Emergency LM	2200lm±10% (@4000K, Full battery)
Battery Parameters	11.1V/5000mAh
Charging Time	≥24Hours

Units:mm

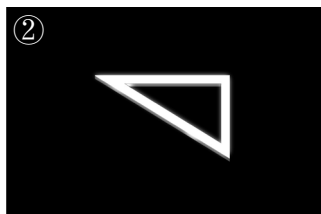
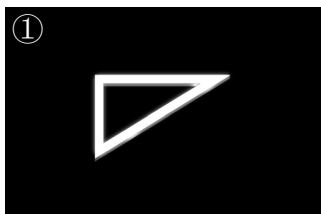


## Installation Accessories

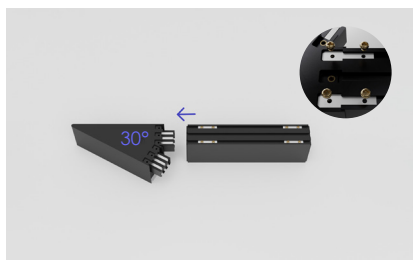


## Installation

### Step 1: Assembly product. (two methods)



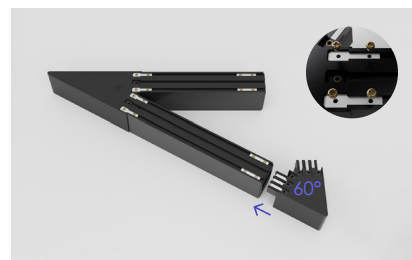
**(Method 1)** Please assemble the modules corresponding to the correct angles.



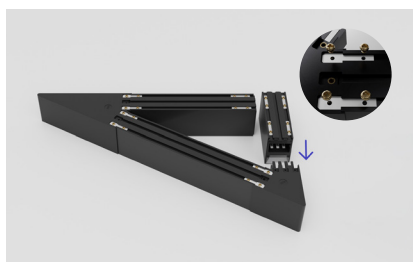
①



②



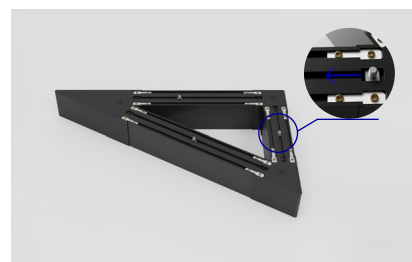
③



④

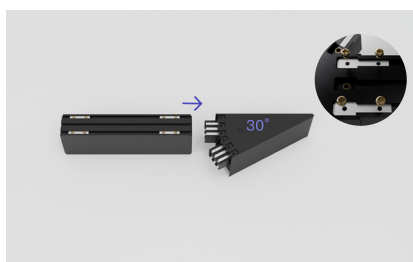


⑤

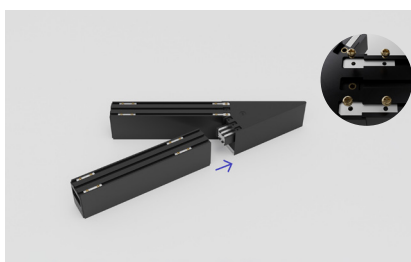


⑥

**(Method 2)** Please assemble the modules corresponding to the correct angles.



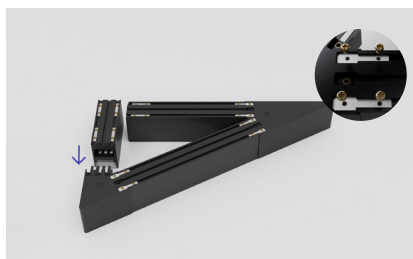
①



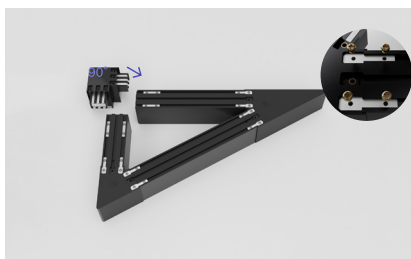
②



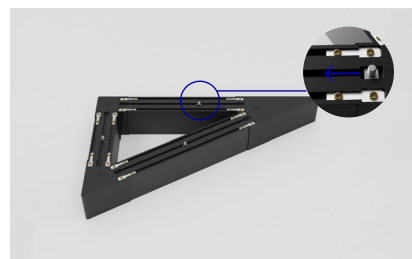
③



④



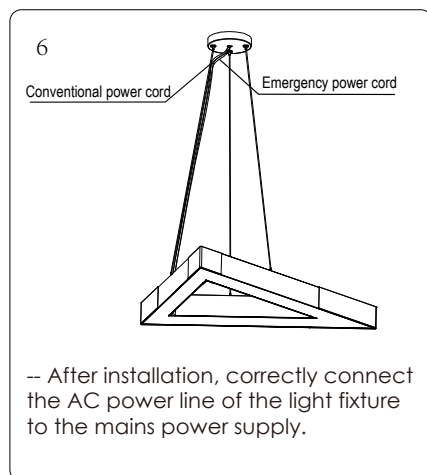
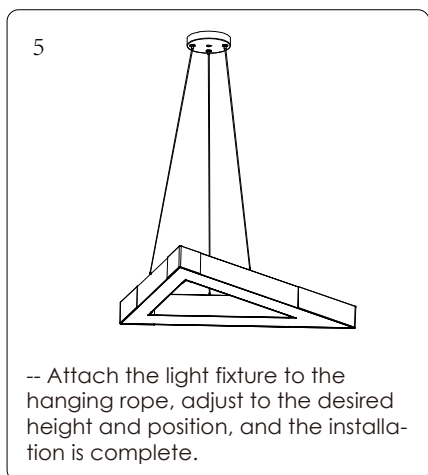
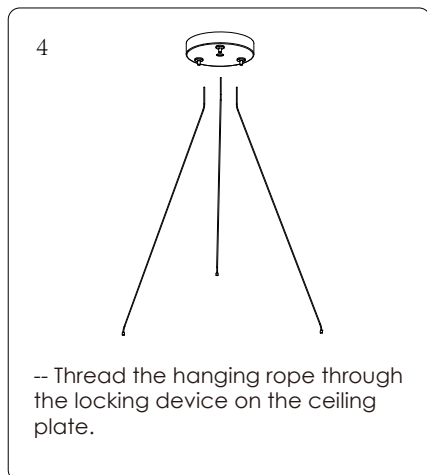
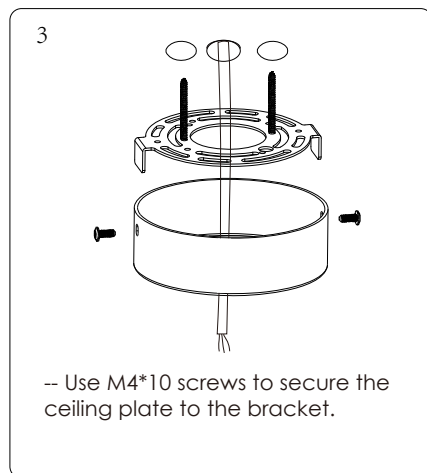
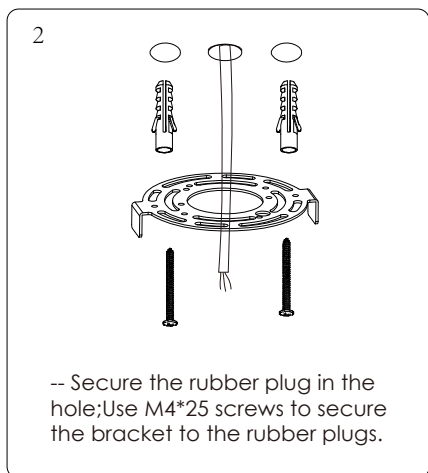
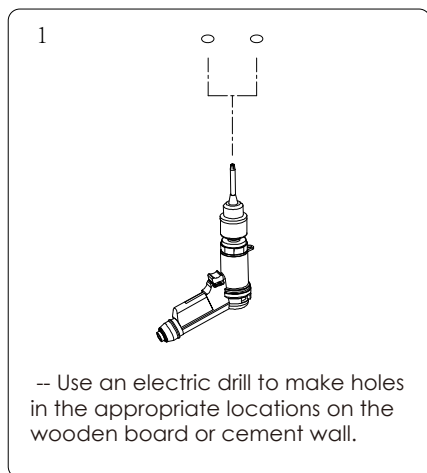
⑤



⑥

## Step 2:Install

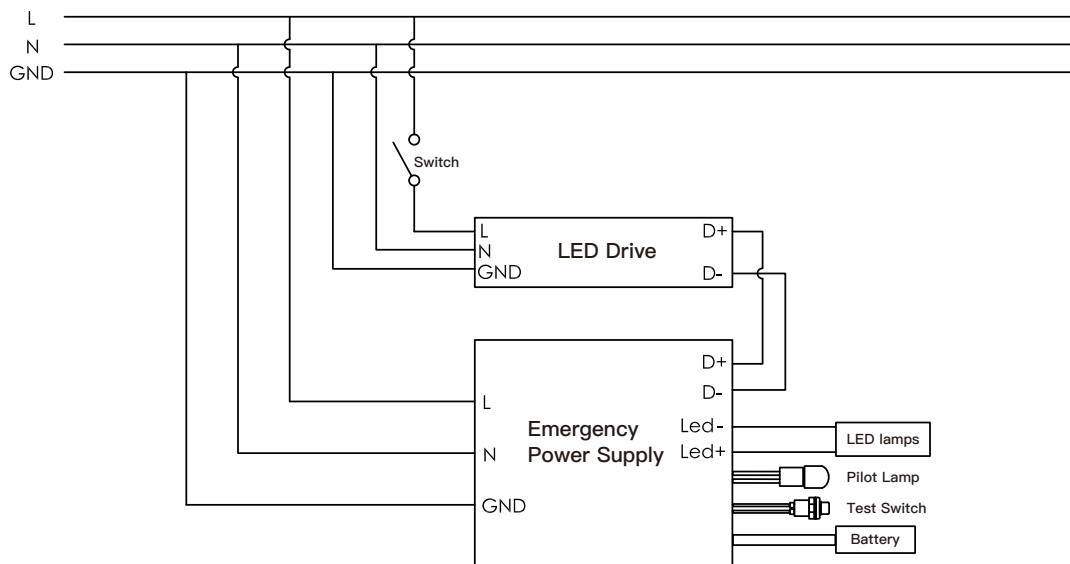
Please make sure that the place of installation could stand 10 times the weight of itself before installing in a place where is no vibration, no swing, and no fire risk.



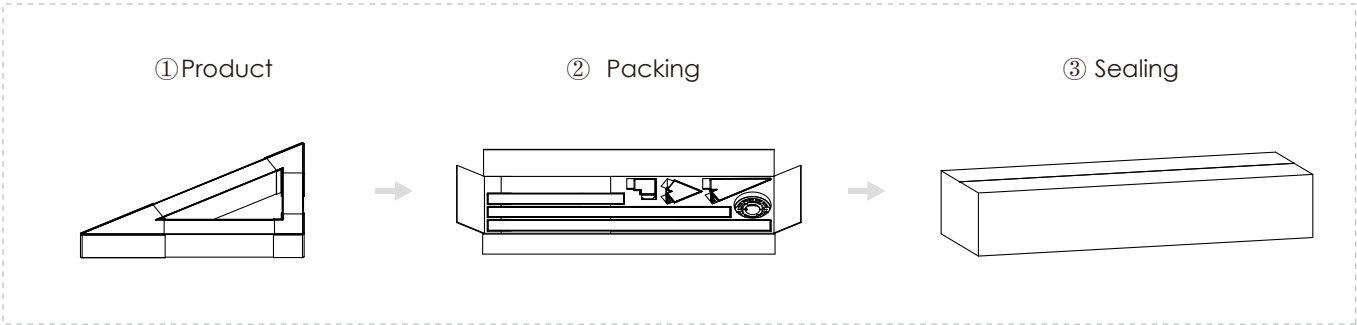
## Emergency Operation

When the AC power goes out, the emergency driver detects the AC power outage and automatically switch to the working emergency mode. The green LED light off. When the AC power is restored, the emergency driver backs to AC power working and starts re-charging, the green LED light on.

## CIRCUIT DIAGRAM



# Packing



Model	HL-PB5075A-C12-E	Carton box	965*575*224mm
Inner box	945*275*100mm	QTY/Carton	4 PCS
NW	6kg/PCS	GW	6.7kg/PCS

## USER INSTRUCTIONS

- 1.The installation of the unit must be done by a qualified electrician.
- 2.The unit must be earthed in case an earth connecting point exists.
- 3.Ensure that the mains is switched off during servicing.
- 4.Ensure that after the installation,the unit is properly fixed and the cable clamps (if exist)are well tighened.
- 5.Manufacturer will not accept liability for injury or damage resulting from incorrect use or installation.