

Feature

- Modular triangular linear lighting offer infinite possibilities.
- High quality, energy-efficient LED Lighting for environmental protection.
- The power supply is built-in and the wiring is of the PUSH-IN shrapnel type. It is easy to install, disassemble, and maintain.
- For offices, conference rooms, supermarkets, home lighting, airports, museums, libraries, corridors, cinemas, hotels, etc.



Modular



DIY Splicing



Customizability



Easy Maintenance



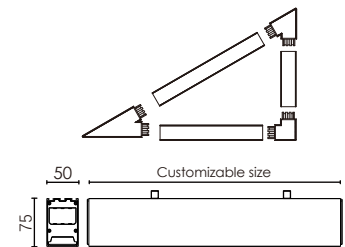
Scalability



Flexibility



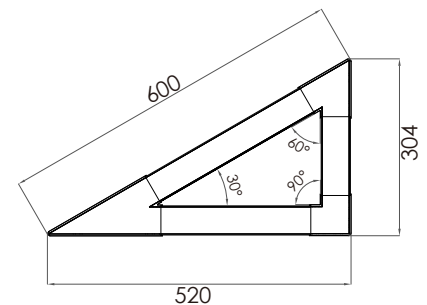
Shrapnel-type Wiring



Luminaire parameters

Model	HL-PB5075A-C06
Size	600*520*304mm
Nominal Power	40W
Lm	6000lm±10%(@4000K)
Beam Angle	110°-120°
Input Voltage	AC100-277V
CCT	2700-6500k
CRI	>80
Protection Grade	IP20
Certification	CE、ROHS、UL
Warranty	3 years

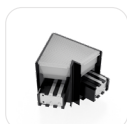
Units:mm



Installation Accessories



module1(30°)



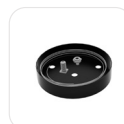
module2(60°)



module3(90°)



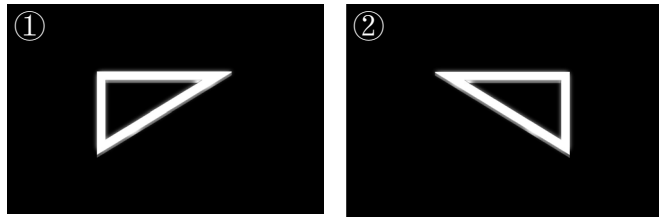
module4



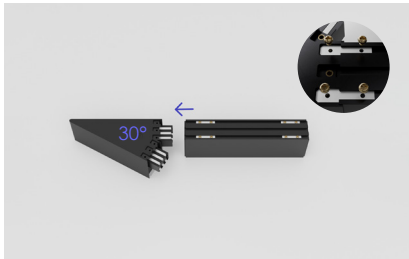
Accessory

Installation

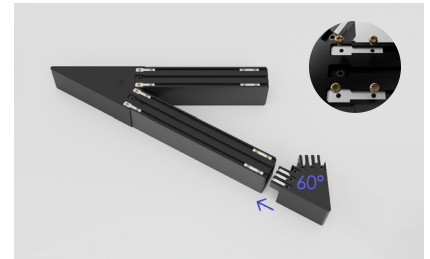
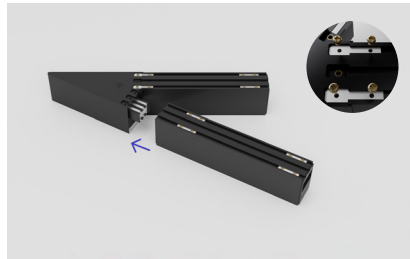
Step 1: Assembly product. (two methods)



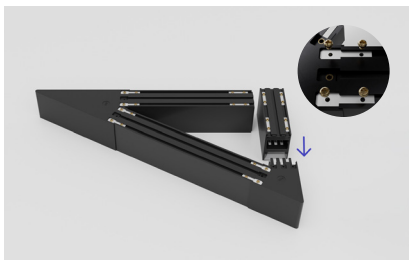
(Method 1) Please assemble the modules corresponding to the correct angles.



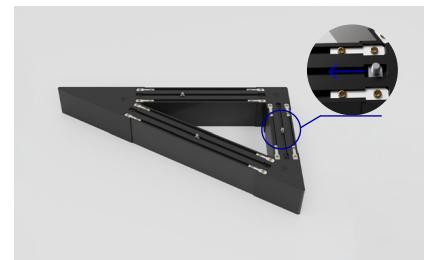
①



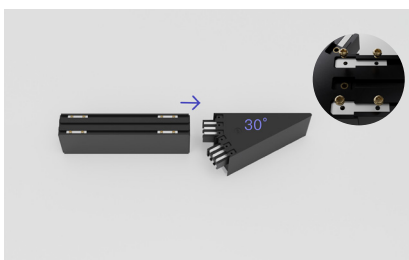
③



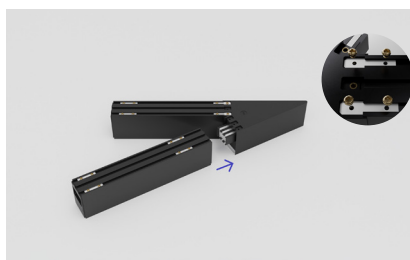
⑤



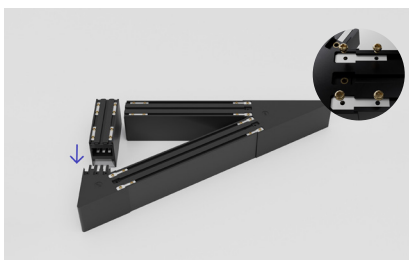
(Method 2) Please assemble the modules corresponding to the correct angles.



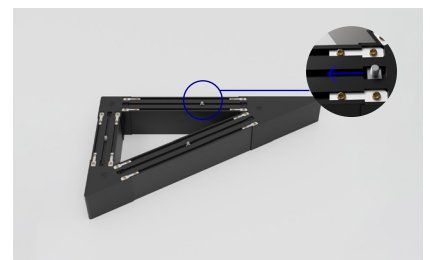
①



③

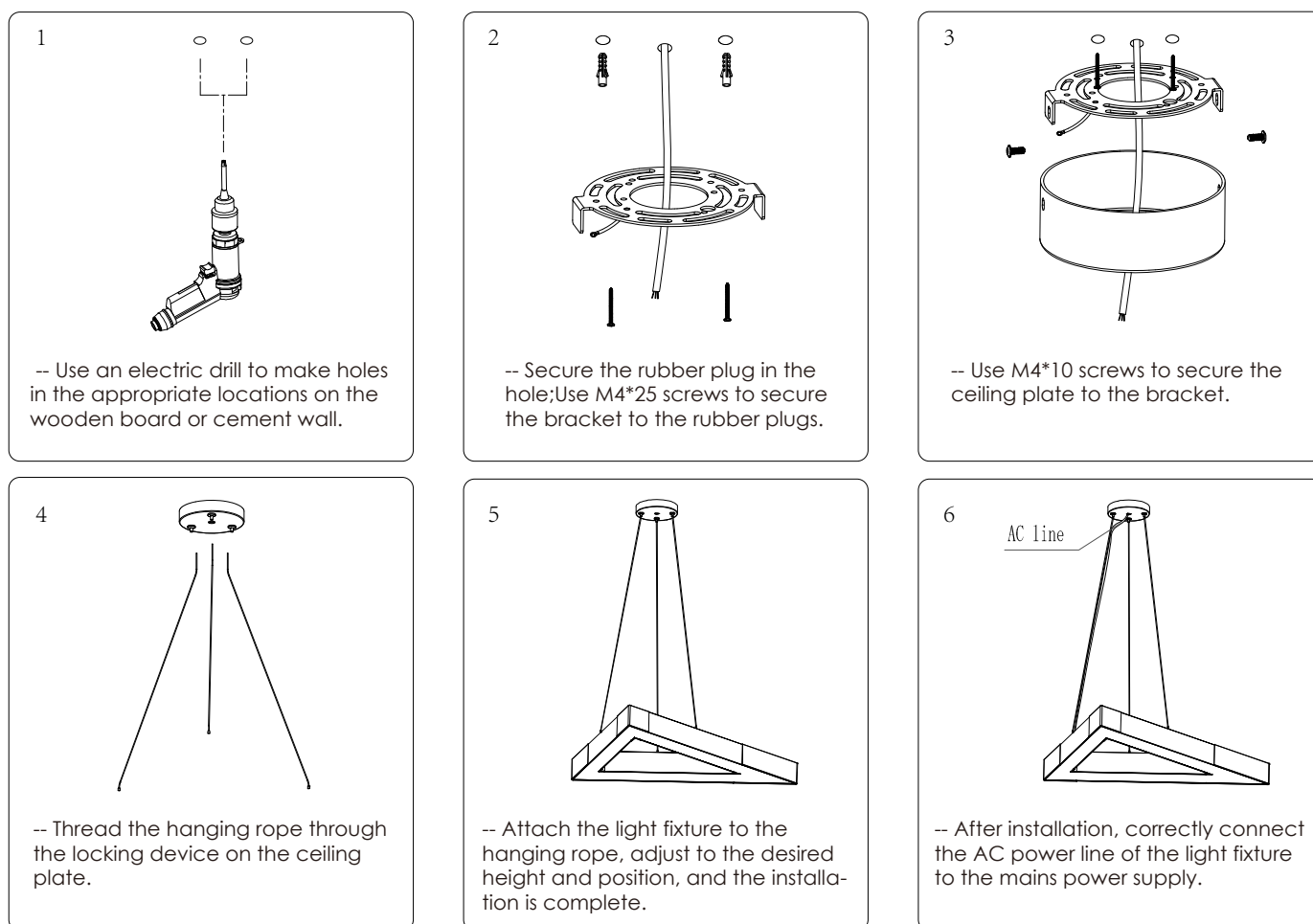


⑤

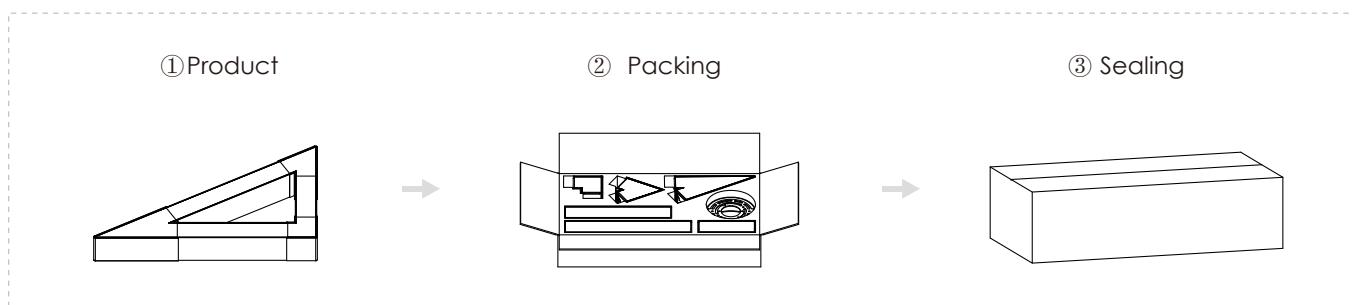


Step 2: Install

Please make sure that the place of installation could stand 10 times the weight of itself before installing in a place where is no vibration, no swing, and no fire risk.



Packing



Model	HL-PB5075A-C06	Carton box	575*575*224mm
Inner box	555*275*100mm	QTY/Carton	4 PCS
NW	2.8kg/PCS	GW	3.3kg/PCS

USER INSTRUCTIONS

1. The installation of the unit must be done by a qualified electrician.
2. The unit must be earthed in case an earth connecting point exists.
3. Ensure that the mains is switched off during servicing.
4. Ensure that after the installation, the unit is properly fixed and the cable clamps (if exist) are well tightened.
5. Manufacturer will not accept liability for injury or damage resulting from incorrect use or installation.