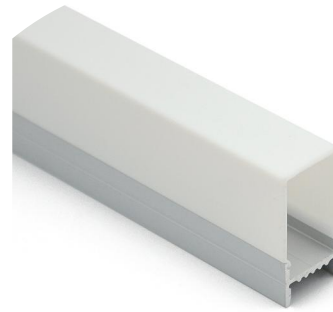


# HL-BAPL033

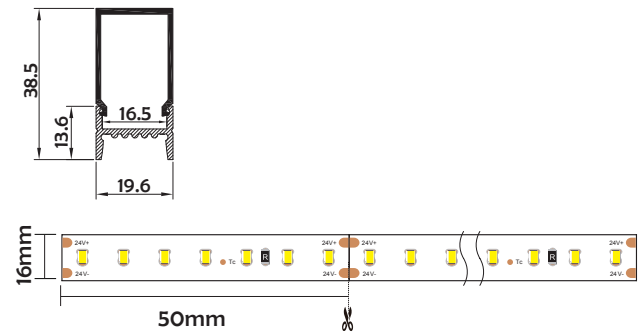


- Professional industrial design with sharp lines.
- Imported PMMA diffuser with uniform and soft lighting.
- AL6063 aluminum profile with excellent heat dissipation performance.
- Closed-fitting end cap without screw, easier installation.



## Basic Parameters

|                       |  |
|-----------------------|--|
| Material              | AL6063+PMMA  |
| Surface               | Anodized/Painting  |
| Lighting source width | 16mm   |
| Length                | 4m/max   |
| Application           | For offices / conference rooms / supermarkets / home lighting application. |



## Installation Accessories



Aluminum Profile



End Cap



Clip

### • Optional cover



Opal matte (PMMA)



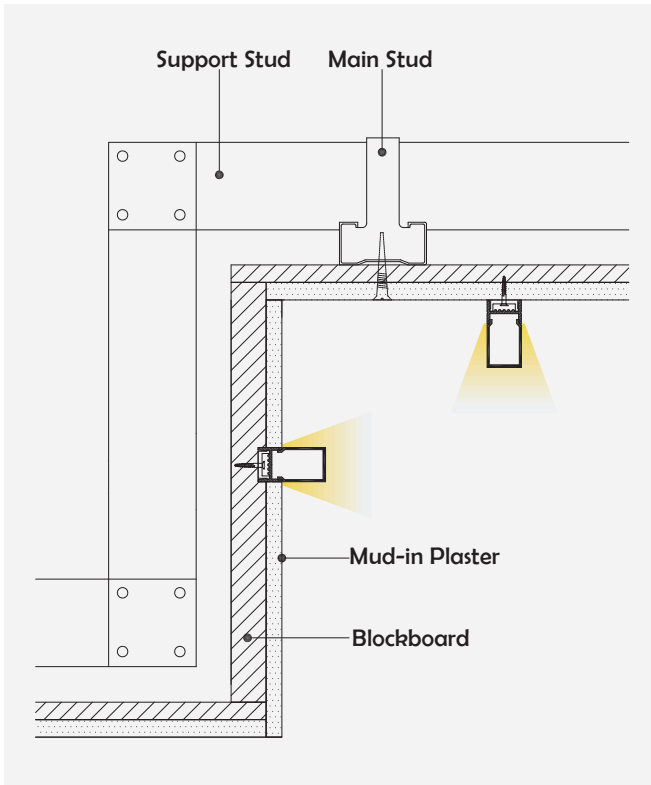
Clear (PMMA)



Semi-clear (PMMA)

| Model      | Cover Model | Cover |                                   |         | End Cap | Clip | Suspended Rope (Set) | Connector | Lighting Source (width) |
|------------|-------------|-------|-----------------------------------|---------|---------|------|----------------------|-----------|-------------------------|
|            |             | PC    | PMMA                              |         |         |      |                      |           |                         |
| HL-BAPL033 | BAPL033     | /     | Opal matte<br>Clear<br>Semi-clear | Plastic | Plastic | /    | /                    | max 16mm  |                         |

## | Structure image



## | Effect image



## | Application

