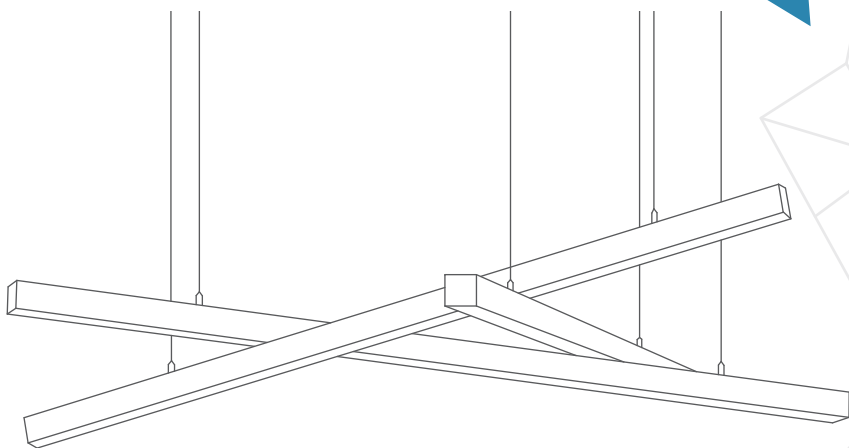




HELIAN

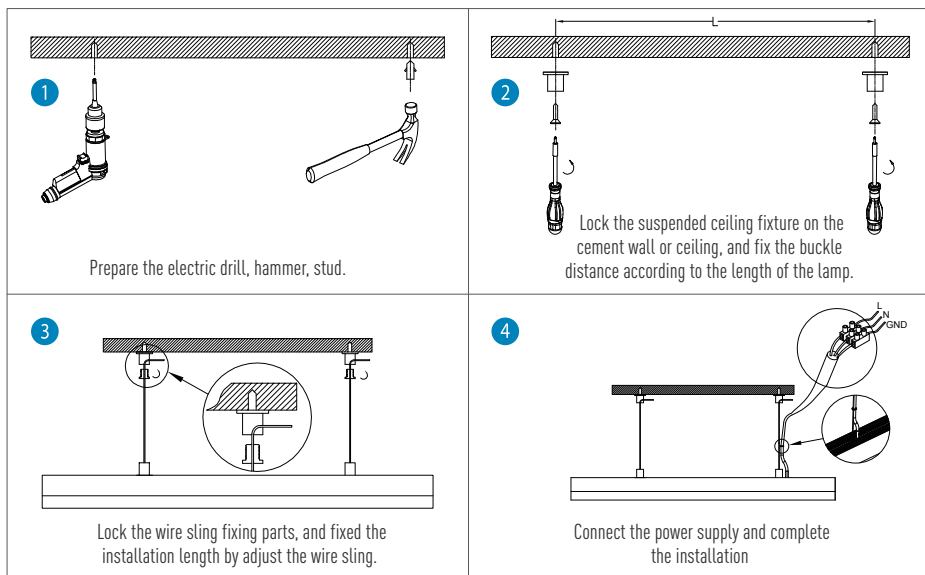
INSTALLATION MANUAL

Led Linear Light



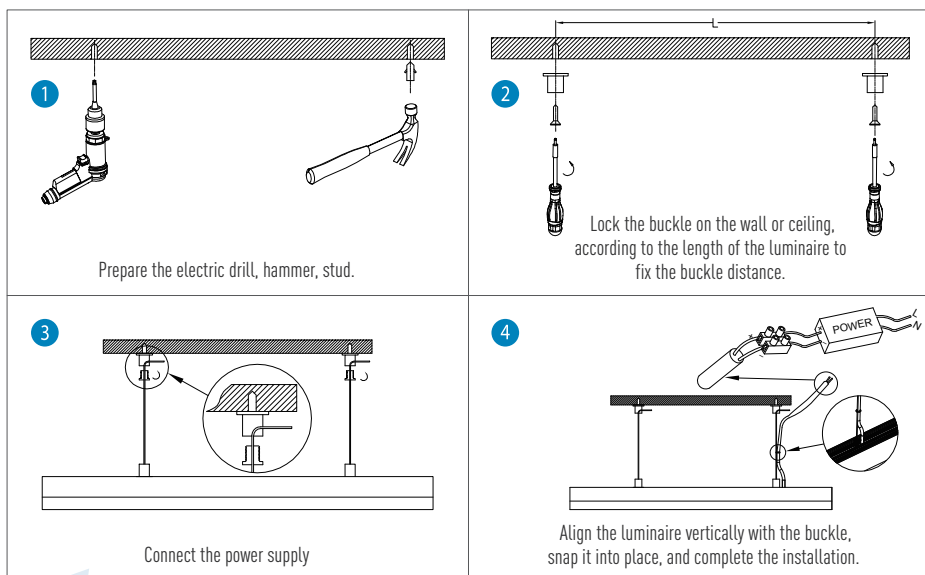
01

Suspended Mounted Installation (Built-in Power Supply)

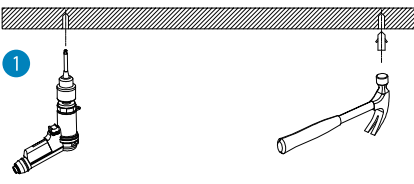
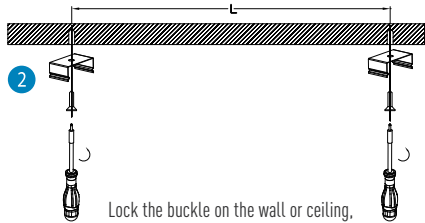
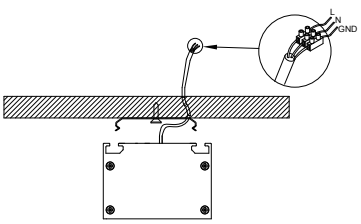
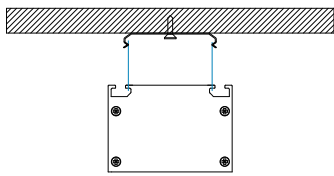


02

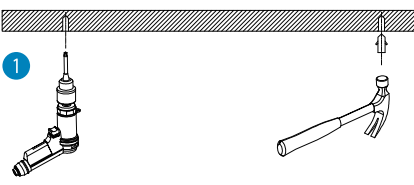
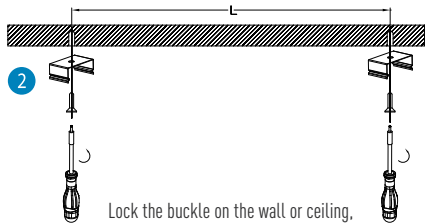
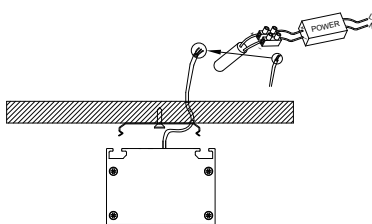
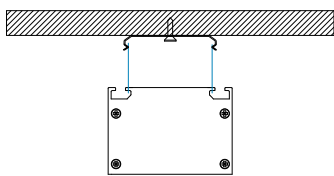
Suspended Mounted Installation (External Power Supply)



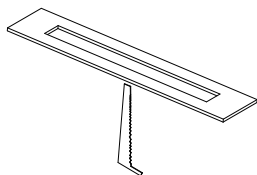
03**Surface Mounted Installation (Built-in Power Supply)**

<p>1</p>  <p>Prepare the electric drill, hammer, stud.</p>	<p>2</p>  <p>Lock the buckle on the wall or ceiling, according to the length of the luminaire to fix the buckle distance.</p>
<p>3</p>  <p>Connect the power supply</p>	<p>4</p>  <p>Align the luminaire vertically with the buckle, snap it into place, and complete the installation.</p>

04**Surface Mounted Installation (External Power Supply)**

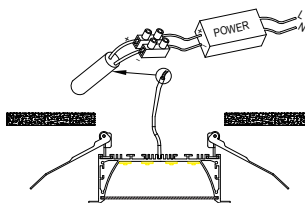
<p>1</p>  <p>Prepare the electric drill, hammer, stud.</p>	<p>2</p>  <p>Lock the buckle on the wall or ceiling, according to the length of the luminaire to fix the buckle distance.</p>
<p>3</p>  <p>Connect the power supply</p>	<p>4</p>  <p>Align the luminaire vertically with the buckle, snap it into place, and complete the installation.</p>

1



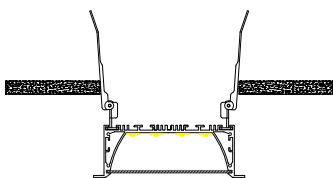
Make a hole in the ceiling according to the size of the lamp fittings.

2



Connect the power supply

3



Put the spring button vertically into the ceiling

4



Put down the spring button

Please noted when installation,maintenance and electrical connections.

- 1.Must disconnect the electrical connection before installing accessories or replacing the drive power,light source.
- 2.Lamps are not suitable to coat with insulation materials and cannot be covered by them.
- 3.Lamps cannot be installed on the surface of conductive materials.
- 4.For lamps suspended mounted by suspended ropes, the power cord cannot withstand the tension.
- 5.When repairing or replacing parts, only can use original parts.
- 6.The lamp's installation, maintenance, electrical connections, etc. should be completed by relevant professionals.



Shenzhen Helian Electronics Co.,Ltd

📍 Address: 3F, Tonggao building 2, Sanlian industrial area, Songbai Rd, Shiyuan Town, Bao'an District, Shenzhen, Guangdong, China

☎ Tel: (86)-755-27606785

📠 Fax: (86)-755-27607521

✉ E-mail: admin@hlled.com

🌐 Web: WWW.hlled.com