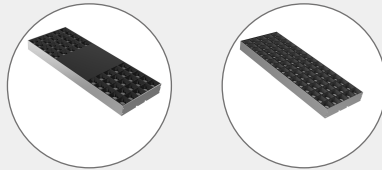
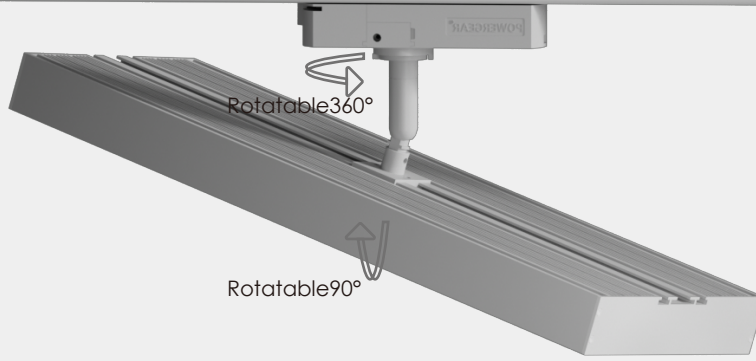


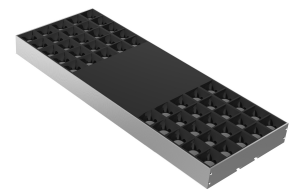
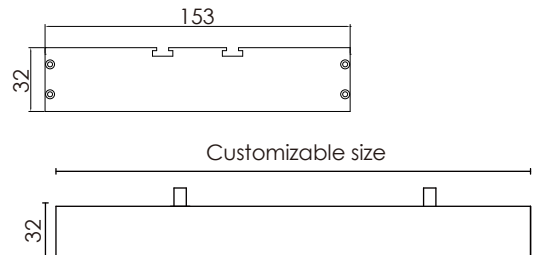
UGR<16


Feature

- Modernist design, exquisite lines, fashion, simplicity, with the characteristics of modern lighting fixtures; simple and fast installation, flexible, easy maintenance, can directly replace the traditional track lights.
- LED 3030-1W single chip, low power consumption, long lifetime, good heat dissipation, energy saving and environmental protection.
- Built-in DC30V constant current drive, safe and reliable, no strobing.
- Professional anti-glare grille reflector cup, anti-glare value UGR<16, comfortable light output, eye protection, reflector cup angle optional (15°/30°/45°)
- Large illumination area, which is equivalent to 3 times larger than traditional track lights.
- Applications: shopping malls (clothing, furniture and other brand stores), automobile display, jewelry, star-rated hotels, brand clothing, high-grade clubs, exhibition halls, chain stores, professional windows, counters, accent lighting and other places

Luminaire parameters

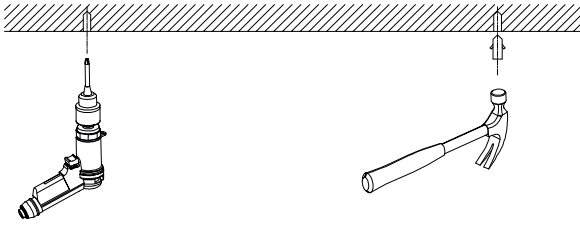
Model	HL-TA082H04-00	HL-TA082H04-01
Size	L400*W153*H32mm	L400*W153*H32mm
Lm	4400Lm	3000Lm
Input Voltage	AC100-240V	AC100-240V
Beam Angle	15°/30°/45°	15°/30°/45°
Nominal Power	45W	30W
CCT	2700-6500k	2700-6500k
CRI	>80	>80
Protection Grade	IP40	IP40
Certification	CE, RoHS	CE, RoHS
Warranty	3 years	3 years



(HL-A082H04-00) 3 rows of reflector cup

(HL-A082H04-01) 2 rows of reflector cup+middle cover plate

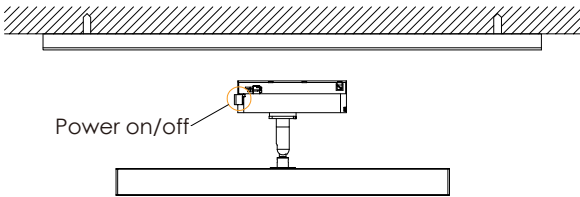
Installation



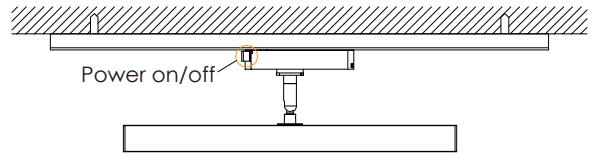
① Prepare the electric drill, hammer, stud .



② Attach the rail profile to the concrete wall or ceiling with screws.



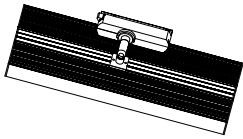
③ Make sure that the power switch for the rail connector is closed at all the times while connecting the lamp and rail profile.



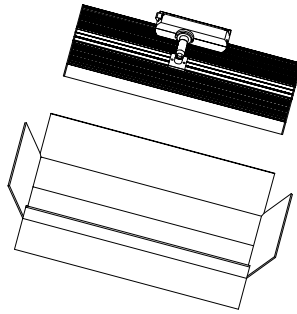
④ To fix the lamp, turn on the rail connector's power switch and having connected the circuit, the installation is complete.

Packing

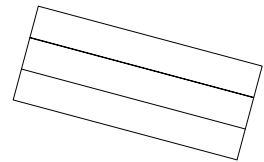
① Product



② Packing



③ Sealing



Model	HL-TA082-L04	Carton box	1245*340*175mm
Inner box	410*163*80mm	QTY/Carton	12 PCS

Notices

- 1.The power supply must be turned off before installation.
- 2.Make sure the product is mounted under the surface of the object to be installed, and finally turn on the power to light up.
- 3.This product is for indoor use only.
- 4.This product is warranted for 3 years and problems occur within 3 years (except for human factors and accidental factors), free maintenance.
- 5.The product is not responsible for damage caused by accidental factors or improper use.