

HL-BAPL065-F

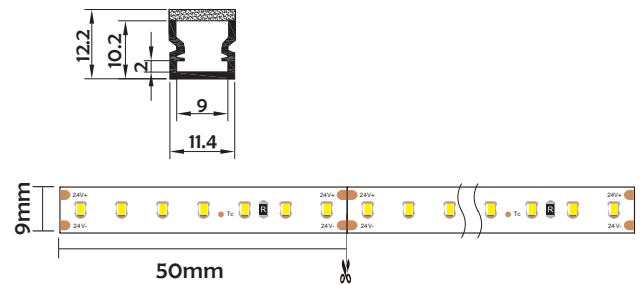


- Professional industrial design with sharp lines.
- Imported PMMA diffuser with uniform and soft lighting.
- Closed-fitting end cap without screw, easier installation.
- Waterproof design, IP67.



I Basic Parameters

Material	PMMA
Surface	Double color
Lighting source width	9mm
Length	4m/max
Application	For outdoors/building/pool /square decoration/park decoration application.



I Installation Accessories



End Cap

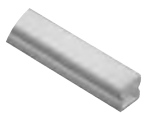


Clip

IP 67

Waterproof Grade

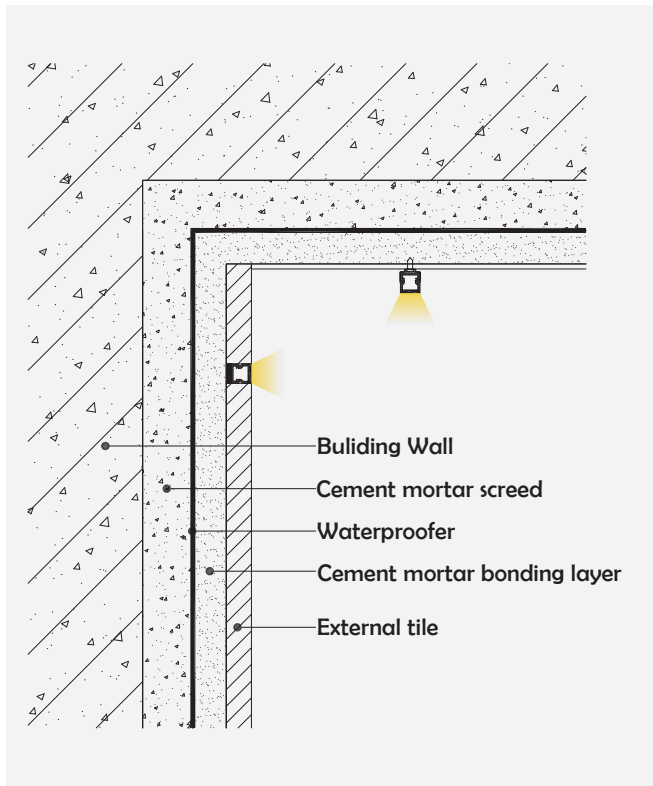
• Optional cover



Opal matte+light lense (PMMA)

Model	Cover Model	Cover		End Cap	Clip	Suspended Rope (Set)	Connector	Lighting Source (width)
		PC	PMMA					
HL-BAPL065-F	PMMA	/	Opal matte+light lense	ABS	Stainless steel	/	/	max 9mm

I Structure image



I Effect image



I Application

