

# HL-BAPL005

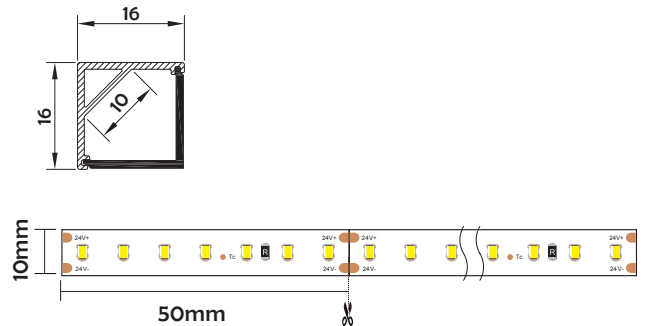


- Professional industrial design with sharp lines.
- Imported PC /PMMA diffuser with uniform and soft lighting.
- AL6063 aluminum profile with excellent heat dissipation performance.
- Closed-fitting end cap without screw, easier installation.



## I Basic Parameters

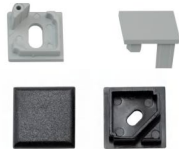
|                       |   |
|-----------------------|---|
| Material              | AL6063+PC/PMMA  |
| Surface               | Anodized/Painting   |
| Lighting source width | 10mm  |
| Length                | 4m/max  |
| Application           | For wardrobe / Bookcase / Bars / Counter and other cabinet application. |



## I Installation Accessories



Aluminum Profile



End Cap



Clip

### • Optional cover



Opal (PC)



Opal matte (PMMA)



Clear (PMMA/PC)



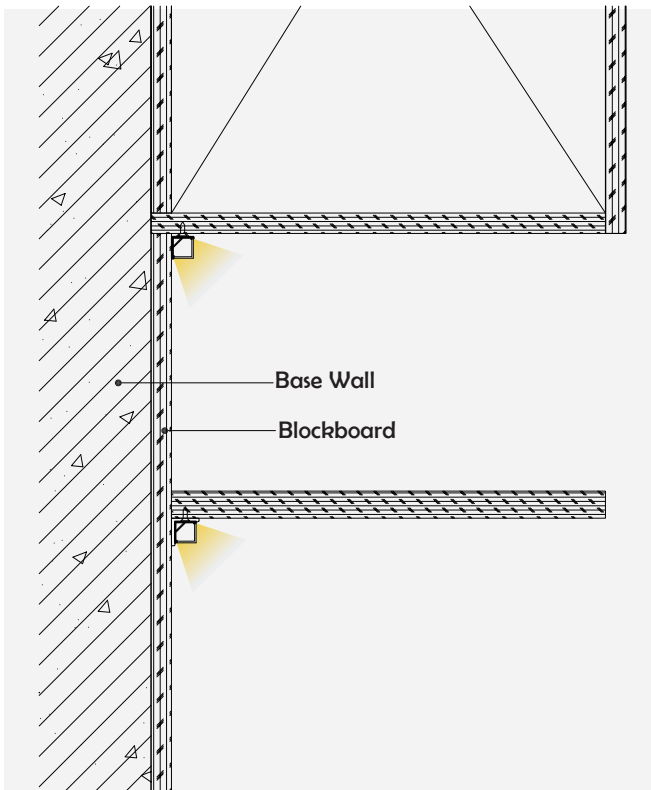
Semi-clear (PMMA/PC)



Black clear (PC)

| Model      | Cover Model | Cover                                      |                                   | End Cap | Clip                       | Suspended Rope (Set) | Connector | Lighting Source (width) |
|------------|-------------|--|-----------------------------------|---------|----------------------------|----------------------|-----------|-------------------------|
|            |             | PC   | PMMA                              |         |                            |                      |           |                         |
| HL-BAPL005 | BAPL005     | Opal<br>Clear<br>Semi-clear<br>Black clear | Opal matte<br>Clear<br>Semi-clear | Plastic | Plastic<br>Stainless steel | /                    | /         | max 10mm                |

## I Structure image



## I Effect image



## I Application

