

HL-BAPL015

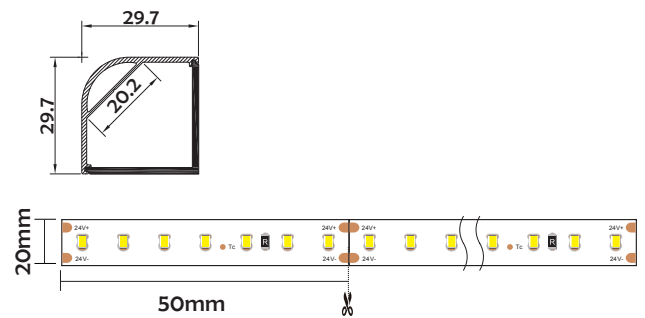


- Professional industrial design with sharp lines.
- Imported PMMA diffuser with uniform and soft lighting.
- AL6063 aluminum profile with excellent heat dissipation performance.
- Closed-fitting end cap without screw, easier installation.



I Basic Parameters

Material	AL6063+PMMA
Surface	Anodized/Painting
Lighting source width	20mm
Length	4m/max
Application	For wardrobe / bookcase / bars / counter and other cabinet application.



I Installation Accessories



Aluminum Profile



End Cap



Clip

• Optional cover



Opal matte (PMMA)



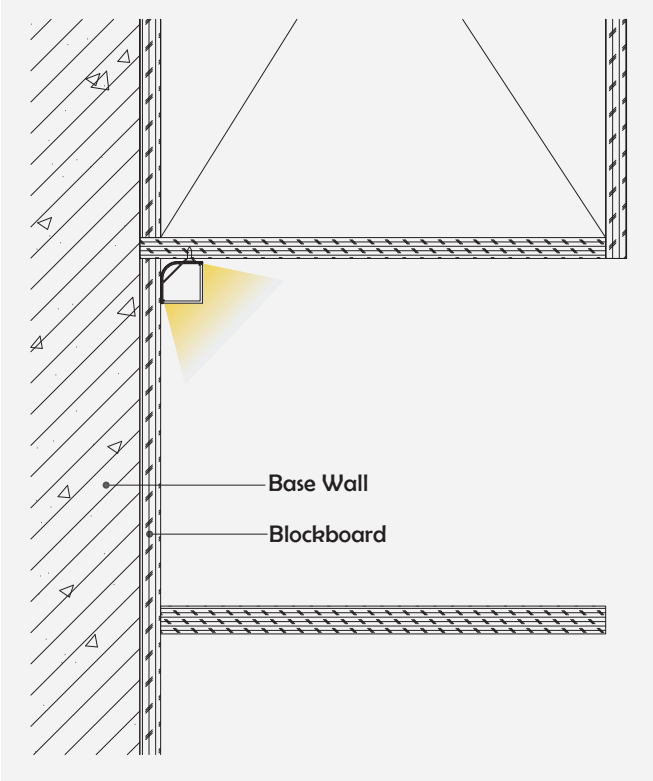
Clear (PMMA)



Semi-clear (PMMA)

Model	Cover Model	Cover		End Cap	Clip	Suspended Rope (Set)	Connector	Lighting Source (width)
		PC	PMMA					
HL-BAPL015	BAPL015	/	Opal matte Clear Semi-clear	Plastic	Stainless steel	/	/	max 20mm

I Structure image



I Effect image



I Application

